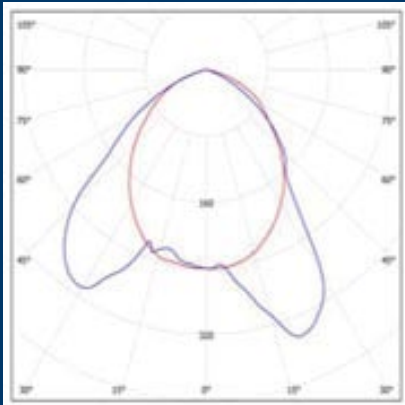


# Flood Light



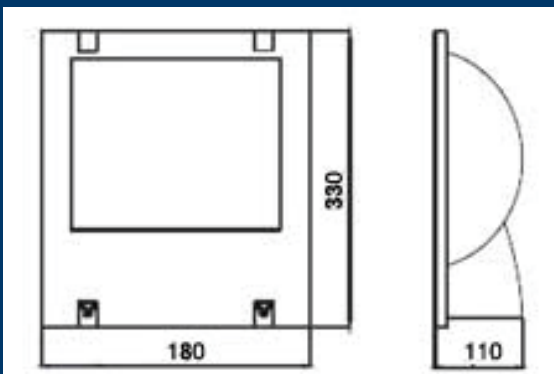
LVD Smart Dragon Lamp

## Photometrics



40W Smart Dragon Lamp

## Dimensions



Name: Flood Light

Serial Code: 0553-1

Dimension: 180x330x110 mm

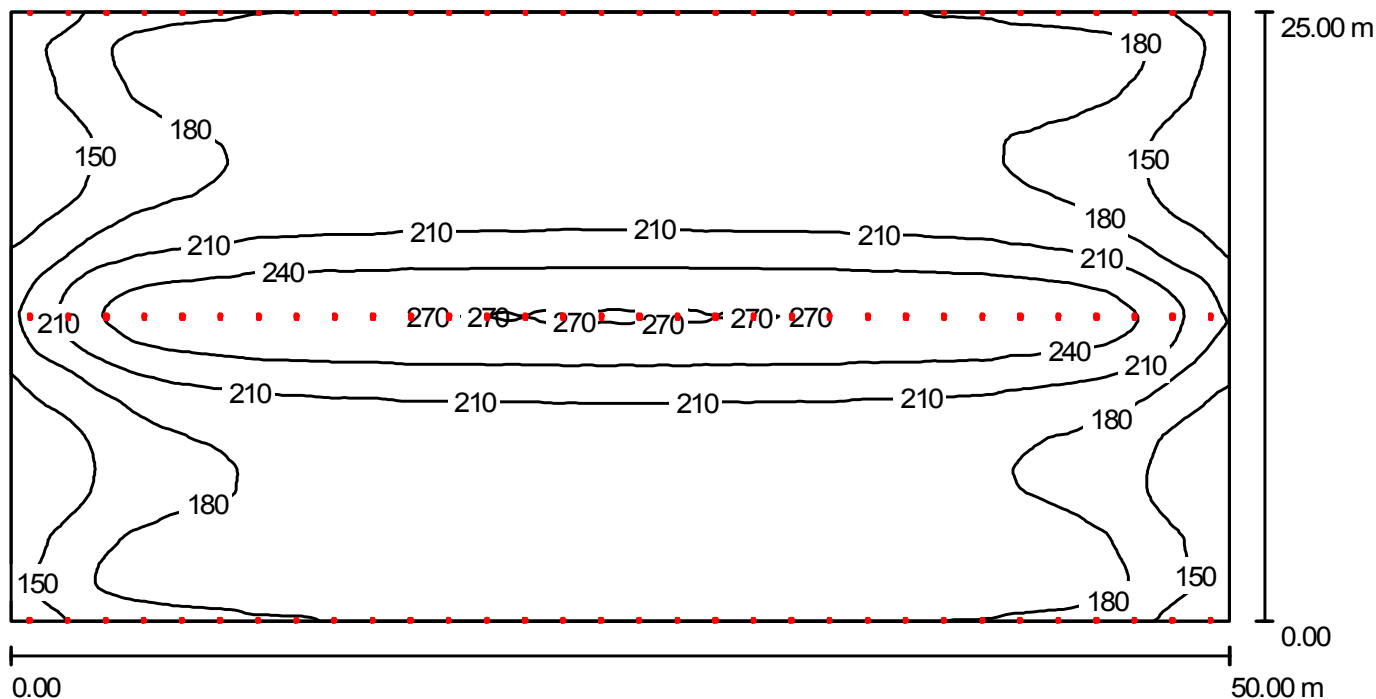
Wattage:40W

Package Dimension: 320x425x160 mm

Features:

1. High pressure die-casting aluminum cover, corrosion-resistant and durable.
2. Electrostatic spray surface
3. Imported mirror surface aluminum reflector with excellent reflection effect and optical properties
4. Can match with our LVD smart dragon lamp with its excellent Color Rendering Index and light efficiency, long life span, no flicker and energy saving, wide range of color temperature and soft light ,stable light output.

上海宏源照明电器有限公司  
 Shanghai Hongyuan LIGHTING & Electric Equipment Co.,Ltd  
 上海市真南路5028号  
 No.5028 Zhennan Road



Height of Room: 8.000 m, Mounting Height: 6.000 m, Light loss factor: 0.80

Values in Lux, Scale 1:358

Surface	$\rho$ [%]	$E_{av}$ [lx]	$E_{min}$ [lx]	$E_{max}$ [lx]	u0
work plane	/	198	125	273	0.629
floor	20	192	123	252	0.638
ceiling	70	55	42	64	0.770
Walls (4)	50	111	53	813	/

工作面:  
 Height: 0.850 m  
 Grid: 128 x 128 Points  
 Boundary Zone: 0.000 m

### Luminaire Parts List

No.	Pieces	$\Phi$ [lm]	P [W]
1	128	3200	40.0
		Total: 409600	5120.0

Specific connected load:  $4.10 \text{ W/m}^2 = 2.07 \text{ W/m}^2/100 \text{ lx}$  (Ground area:  $1250.00 \text{ m}^2$ )